

TL4- Standard Single-sided barrier



CONCRETE WORKS



CONCRETE WORKS



BEAM
CONCRETE WORKS

TL4- Standard Single-sided barrier

General

Applications

BEAM CONCRETE BARRIER CAN BE USED IN MANY DIFFERENT APPLICATIONS.

Some examples are:

- Road construction
- General road maintenance
- Bridge repairs
- Detours and diversions
- Lane closures
- Security and mine site delineation
- Protection of crowds and pedestrians
- Building and construction site protection

Site Conditions

Our barriers must be placed on a flat, stable and compacted surface capable of being trafficked by road vehicles for short periods. The crossfall Must not Exceed 6%. Unstable surfaces such as deep mud, uncompacted sand or excessively wet surfaces are considered inappropriate. Ideally the surface should be paved and must be free of swales, ditches or other irregularities. The minimum width of stable ground behind the barriers must not be less than the expected deflection of the barrier system.

Barriers must be placed at the same level as the travelled lane and must not be placed in front, behind or on top of kerbing.

Barriers should (where Practicable) be placed parallel to the travelled lane and as far away from the travelled lane as possible.

Our barriers are suitable for use in all atmospheric conditions normally encountered as Australian roads without any reduction effectiveness.

BEAM CONCRETE WORK

Emirates Modern Industrial area, Umm Al Quwain, UAE-P.O.

Box:1771 Tel: +971557830774

info@beamconcretework.com | www.beamconcretework.com



Concrete Barriers, Modular, Pre-Cast, Temporary and Permanent

Description:

Temporary and permanent barrier solutions

Designed the safety shapes of Type-F concrete barriers. The formation of these concrete barriers reduced the damage to vehicles during impact. The shape was achieved by determining the optimum slope angle which minimized the chance of the vehicle tires riding up the concrete barrier upon impact.

TL4- Standard single sided barriers



Actual shape of TL series

Product information:

Item	Barrier
Color	Cement gray
Height	940 mm ±10mm
Width	400 mm
Length	2400±10mm
Structure	Rebar Steel
Weight	608.2 kg/m
Material	C 40 - Concrete
Preparation	Pre cast



Dimensions: typical-The rebar steel size & concrete mix design depend of the type of test. Full-scale tests use barriers with the same or approximately the same dimensions such as TL-3, TL-4

Length: 2400 mm
: 3000 mm

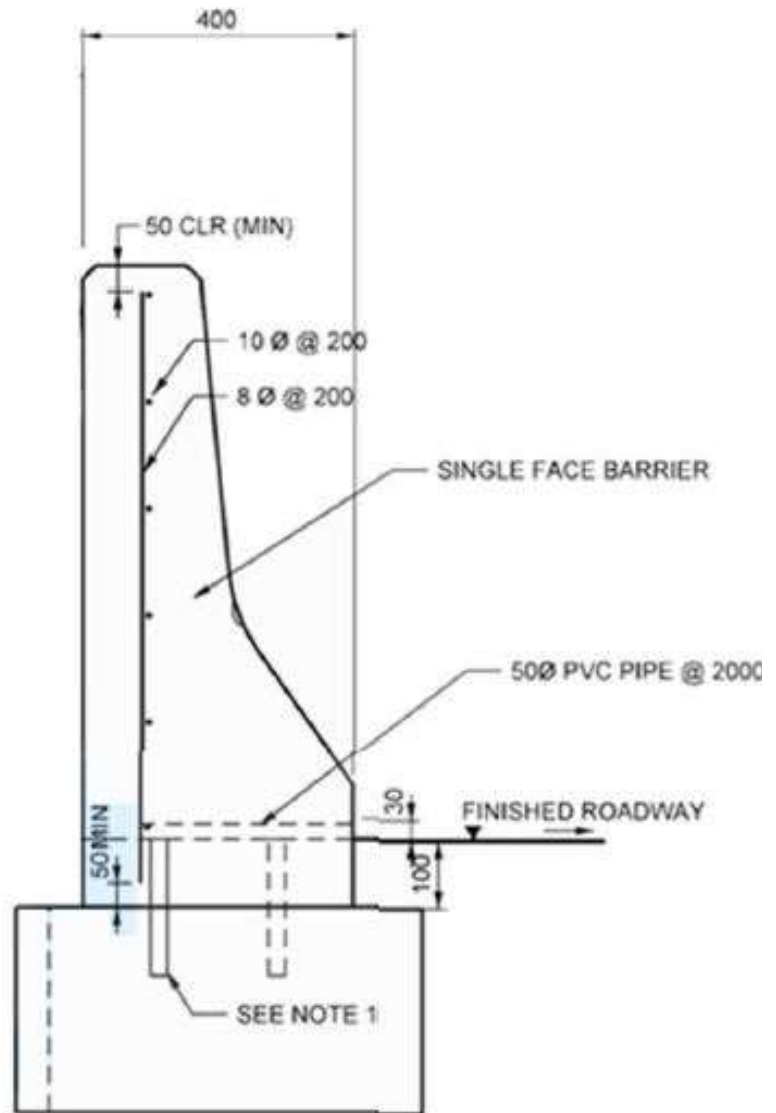


Figure 1

In general, this level is suitable for

The majority of applications on

high-speed highways, freeways,

expressways, and interstate highways with a mixture of trucks and heavy

vehicles.



Installation:

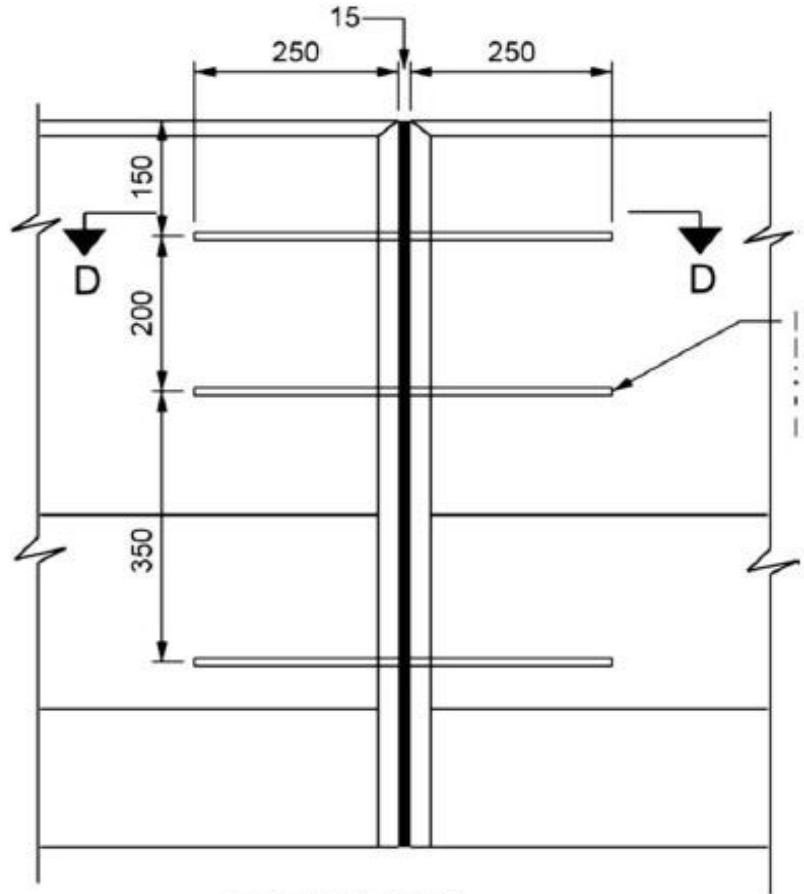


Figure 2

Dowel bars shall be 20 mm Dia

deformed reinforce Steel bars

and staggered side to side. Dowel bars is a most reliable and durable method

For joints.

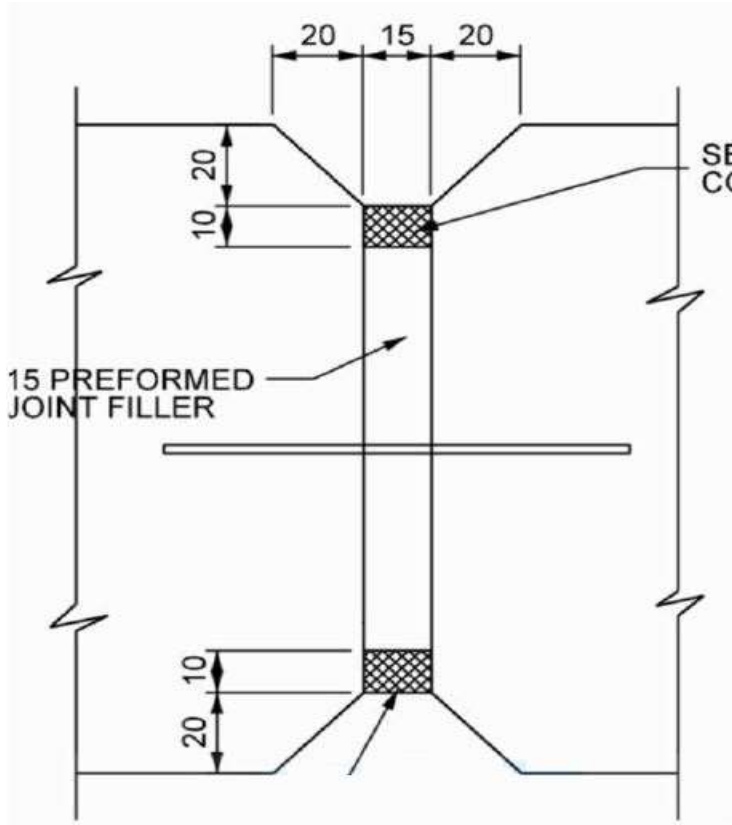


Figure 3

At location where concrete barrier abuts a rigid structure and required gap cannot be

achieved a 50mm thick preformed expansion joint filler conforming to the shape of the barrier shall be installed between the barrier and the structure. Concrete nails or other suitable method shall be used to hold the expansion joint Filler in place.

This guideline is given based on the current knowledge of the product. Any suggested deviation to suit the site conditions shall be forwarded to the responsible **“Beam Concrete Work”** representative for approval before commencing the work



B E A M
CONCRETE WORKS

+971 55 7830774

INFO@BEAMCONCRETEWORKS.COM | WWW.BEAMCONCRETEWORKS.COM

EMIRATES MODERN INDUSTRIAL AREA

UMM AL QUAWAIN - U.A.E