

POLE PROTECTION CONCRETE BARRIER



CONCRETE WORKS



CONCRETE WORKS



BEAM
CONCRETE WORKS

POLE PROTECTION CONCRETE BARRIER

General

Applications

BEAM CONCRETE BARRIER CAN BE USED IN MANY DIFFERENT APPLICATIONS.

Some examples are:

- Road construction
- General road maintenance
- Bridge repairs
- Detours and diversions
- Lane closures
- Security and mine site delineation
- Protection of crowds and pedestrians
- Building and construction site protection

Site Conditions

Our barriers must be placed on a flat, stable and compacted surface capable of being trafficked by road vehicles for short periods. The crossfall Must not Exceed 6%. Unstable surfaces such as deep mud, uncompacted sand or excessively wet surfaces are considered inappropriate. Ideally the surface should be paved and must be free of swales, ditches or other irregularities. The minimum width of stable ground behind the barriers must not be less than the expected deflection of the barrier system.

Barriers must be placed at the same level as the travelled lane and must not be placed in front, behind or on top of kerbing.

Barriers should (where Practicable) be placed parallel to the travelled lane and as far away from the travelled lane as possible.

Our barriers are suitable for use in all atmospheric conditions normally encountered as Australian roads without any reduction effectiveness.

BEAM CONCRETE WORK

Emirates Modern Industrial area, Umm Al Quwain, UAE-P.O.

Box:1771 Tel: +971557830774

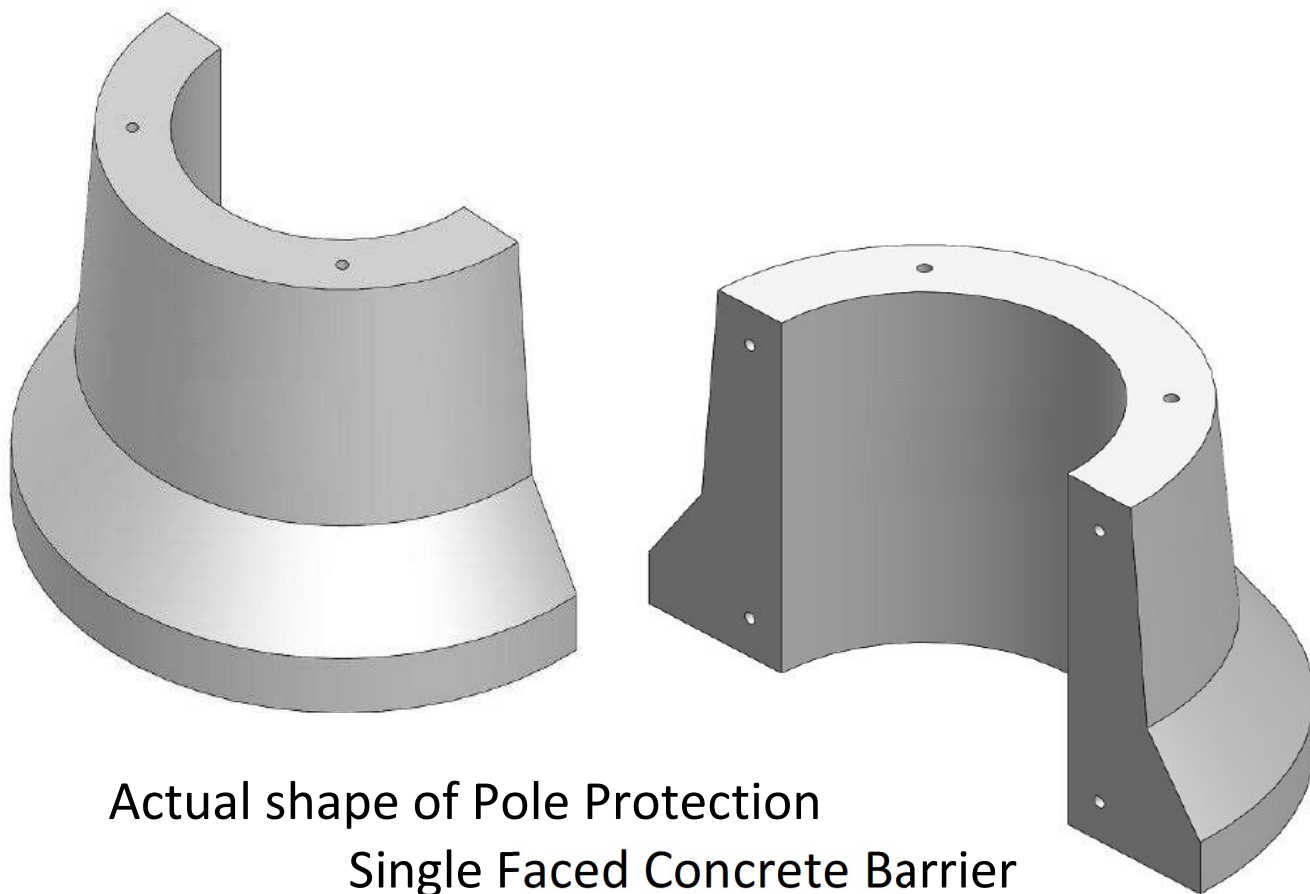
info@beamconcretework.com | www.beamconcretework.com



BEAM
CONCRETE WORKS

POLE PROTECTION CONCRETE BARRIER

POLE PROTECTION SINGLE FACED CONCRETE BARRIER



Actual shape of Pole Protection
Single Faced Concrete Barrier

BEAM CONCRETE WORK

Emirates Modern Industrial area, Umm Al Quwain, UAE-P.O.

Box:1771 Tel: +971557830774

info@beamconcretework.com | www.beamconcretework.com

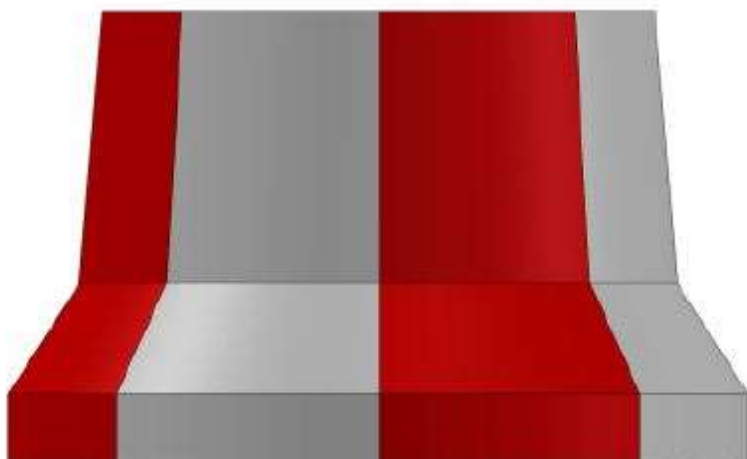
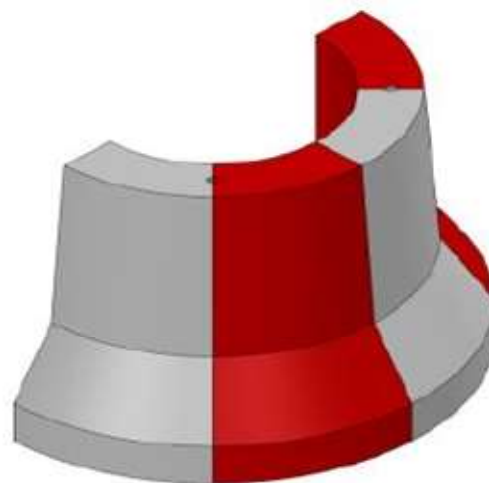


Description:

Temporary and permanent barrier solutions

Pole Protection Single Faced Concrete Barrier is a single faced barrier and we have designed it in a compact manner which is having individual pole protection. It is designed to minimize vehicle damage in case of accidental contact, while preventing crossover and head-on collision.

This compact barrier solution is quick to install and easy to replace if the barriers are damaged due to accidents.



Size

Height	810 mm
Top Width	156 mm
Bottom Width	325 mm
Base Radius	D-1350,d-700

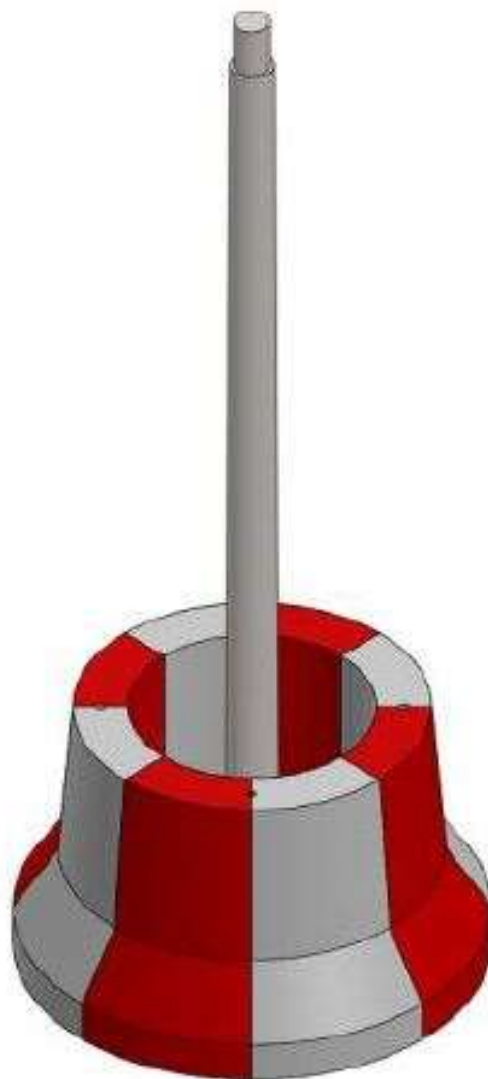


Specifications.

AVERAGE VALUE TABLE

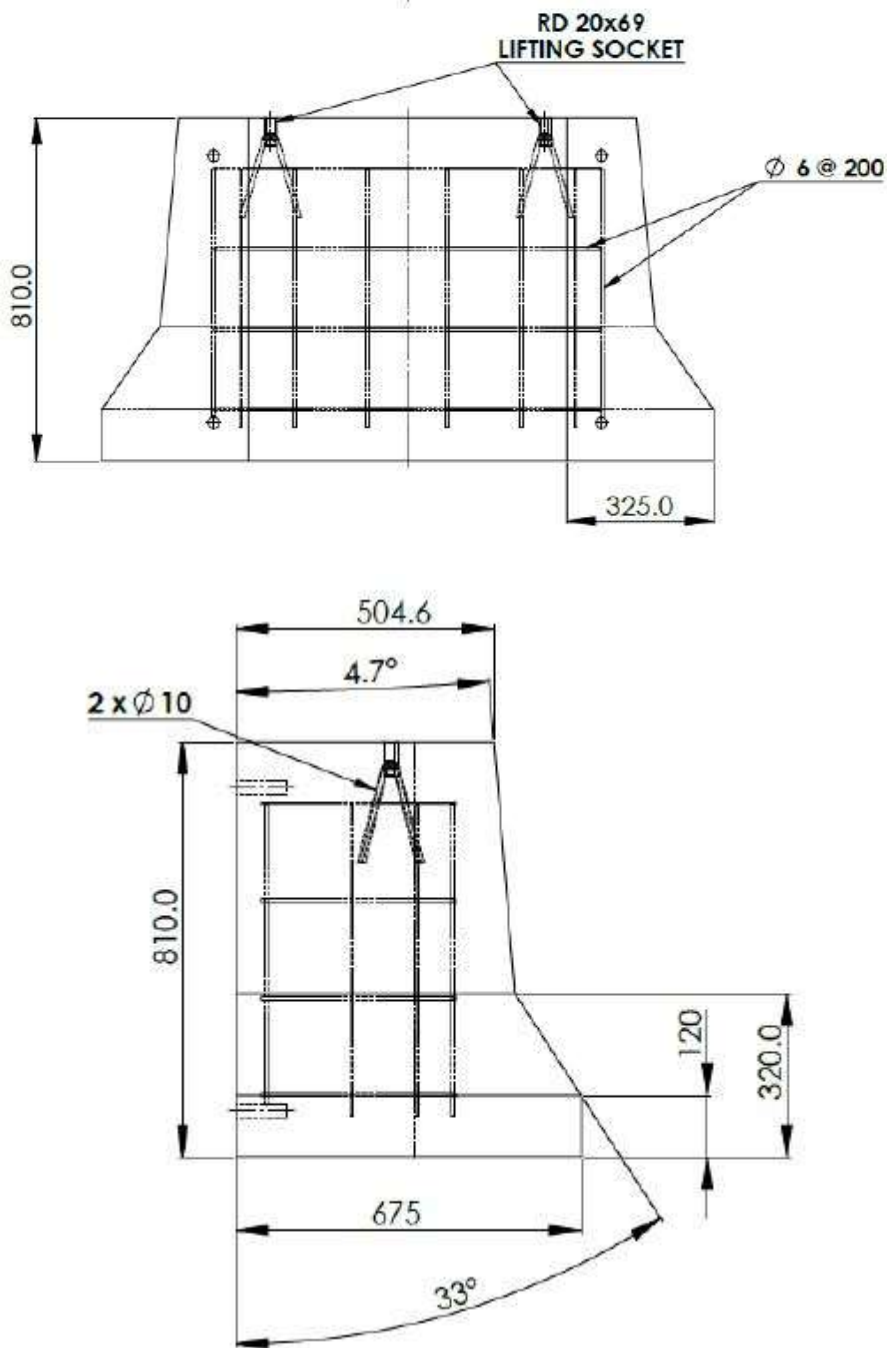
PROPERTIES	POLE PROTECTIONSAFETY BARRIER
Approx. Weight	700Kg
Water Absorption	0.15%
Compressive Strength	12500 psi
Flexural Strength	3000 psi
Splitting Tensile Strength	1400 psi
Impact Strength	0.22 kg.m.sec
Fire Resistance	Class A
Preparation	Pre cast

To be used as general guide lines





Pole Protection –Single Faced Barrier





B E A M
CONCRETE WORKS

POLE PROTECTION CONCRETE BARRIER

Handling: Our designed pole protection single faced barriers possess two lifting sockets on top with 325mm bottom width for easy arrangement to inserting without damaging.

Materials: All materials are sourced in accordance with the appropriate Standard and in accordance with the UAE performance specifications.

Concrete strength at transfer 20 N/mm²

Water-cement ratio of 0.45 Maximum

Reinforcement typically dia 10mm welded mesh.

Design: All units are designed in accordance with RTA. The unit design is typical to Class 3 with a limiting crack width of 0.1mm unless otherwise stated. It is the client's responsibility to provide loading data including any imposed or surcharged loading.

Procedure: Units are wet cast rapidly into Pacman steel molds assist with electro viber @ 100 unit/hour

Finishes: Faces are painted with reflective road marking paint in vertical strips of 50cm Surface marks from stacking timbers, strand runs and fork truck tine marks can be expected. Surface marks of stacking timber, strand run and mold release agent will fade out over time and use. Where a blemish free surface is required, masonry paint application is recommended. Concrete Finishing— Shall be at the option of the producer, produce a finish comparable to the steel form finish and be uniform for all sections in the contract lot.

Trowel Finishes

The finish will be uniform and provide full grout cover to aggregates.

Some trowel marks will be visible

Some color and texture variation may be expected.

Stacking timber marks and cement blooming may be expected.

Color variation, trowel pattern and cement blooming will fade over time and weather site works

Site Access: Full site access free of any obstructions or trenches to all site areas is assumed unless otherwise agreed.

Access is required to both sides of barrier installation unless previously arranged at pricing stage. Delivery vehicles are to unload inside the construction site to minimize on-site handling. A Suitable hard standing surface must be provided to enable safe lifting operations for a 15 tone telehandler or crane.

The hard standing is to extend a minimum of 4m beyond the edge of the working area.

BEAM CONCRETE WORK

Emirates Modern Industrial area, Umm Al Quwain, UAE-P.O.

Box:1771 Tel: +971557830774

info@beamconcretework.com | www.beamconcretework.com



B E A M
CONCRETE WORKS

+971 55 7830774

INFO@BEAMCONCRETEWORKS.COM | WWW.BEAMCONCRETEWORKS.COM

EMIRATES MODERN INDUSTRIAL AREA

UMM AL QUAWAIN - U.A.E