

DOUBLE SIDE MEDIAN CONCRETE BARRIER



CONCRETE WORKS



CONCRETE WORKS

General

BEAM CONCRETE BARRIER CAN BE USED IN MANY DIFFERENT APPLICATIONS.

Some examples are:

- Road construction
- General road maintenance
- Bridge repairs
- Detours and diversions
- Lane closures
- Security and mine site delineation
- Protection of crowds and pedestrians
- Building and construction site protection

Site Conditions

Our barriers must be placed on a flat, stable and compacted surface capable of being trafficked by road vehicles for short periods. The crossfall Must not Exceed 6%. Unstable surfaces such as deep mud, uncompacted sand or excessively wet surfaces are considered inappropriate. Ideally the surface should be paved and must be free of swales, ditches or other irregularities. The minimum width of stable ground behind the barriers must not be less than the expected deflection of the barrier system.

Barriers must be placed at the same level as the travelled lane and must not be placed in front, behind or on top of kerb.

Barriers should (where Practicable) be placed parallel to the travelled lane and as far away from the travelled lane as possible.

Our barriers are suitable for use in all atmospheric conditions normally encountered as Australian roads without any reduction effectiveness.



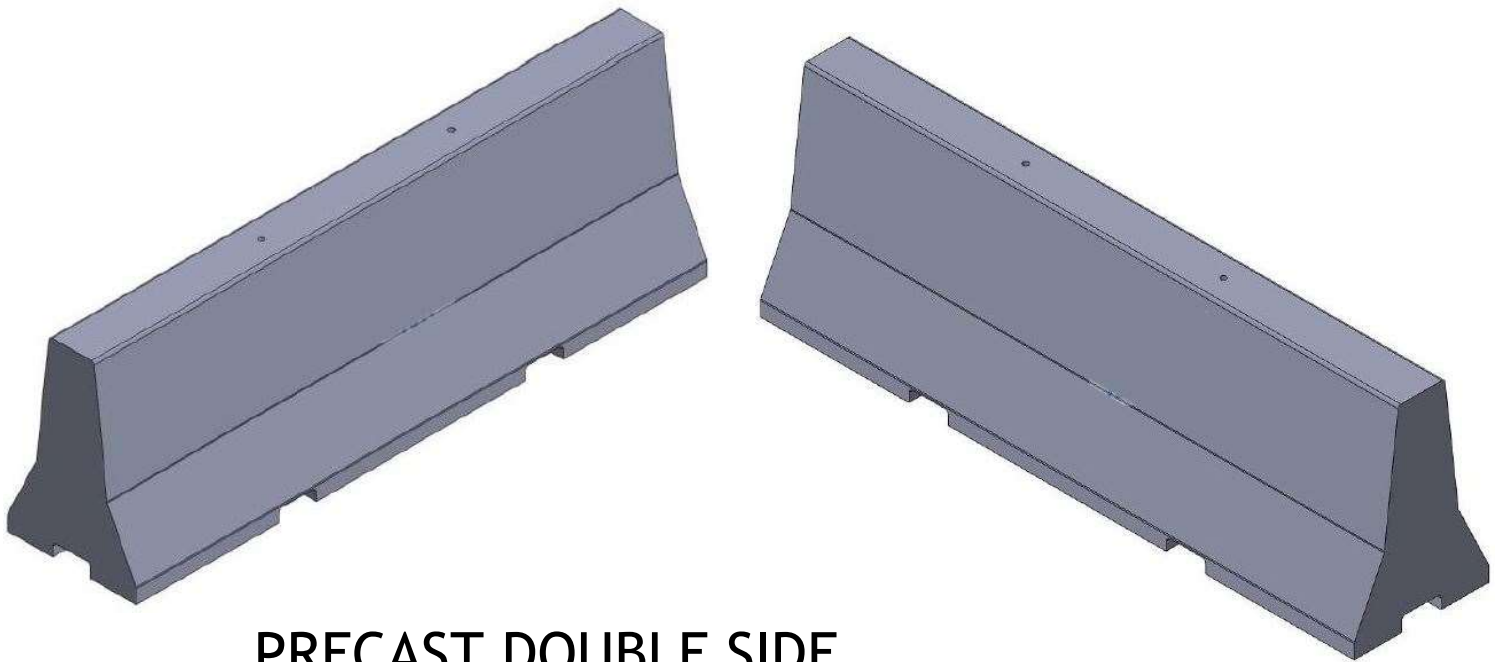
BEAM
CONCRETE WORKS

PRECAST DOUBLE SIDE MEDIAN CONCRETE BARRIER

Description:

Temporary and permanent barrier solutions

Precast Double sided Median Barrier is a double-sided barrier and we have designed it in a compact manner which separates traffic lanes. It is designed to minimize vehicle damage in case of accidental contact, while preventing crossover and head-on collision. This compact barrier solution is quick to install and easy to replace if the barriers are damaged due to road accidents



PRECAST DOUBLE SIDE MEDIAN CONCRETE BARRIER

BEAM CONCRETE WORK

Emirates Modern Industrial area, Umm Al Quwain, UAE-P.O.

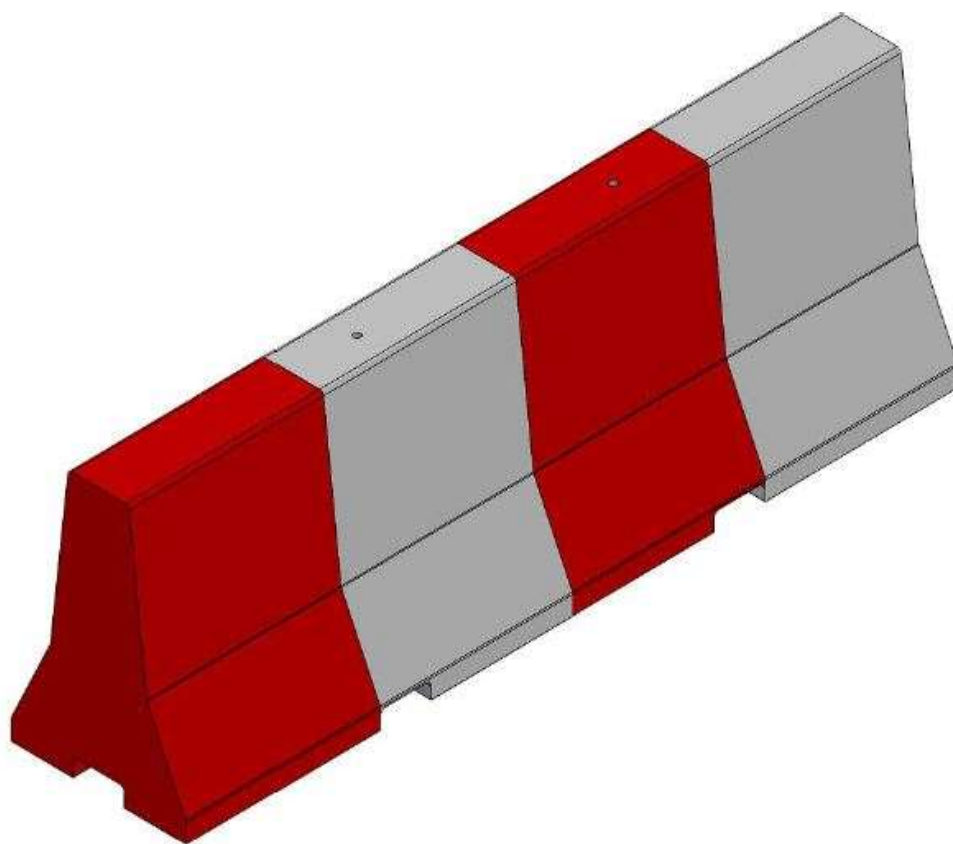
Box:1771 Tel: +971557830774

info@beamconcretework.com | www.beamconcretework.com



BEAM
CONCRETE WORKS

PRECAST DOUBLE SIDE MEDIAN CONCRETE BARRIER



Pre-Cast Double Sided Median Barrier

SIZE

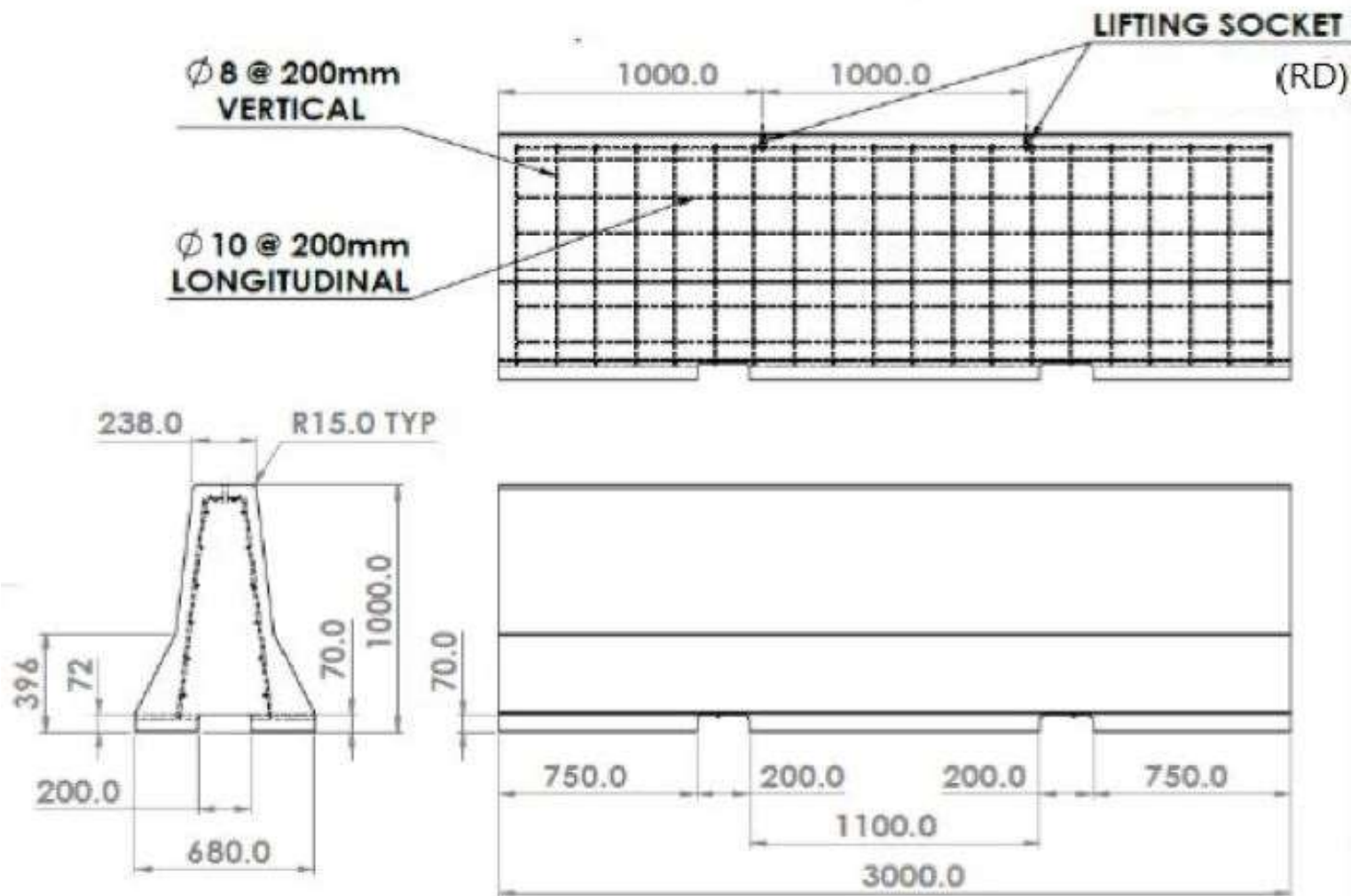
Length	Height	Top	Bottom
3000mm	1000mm	238mm	680mm

BEAM CONCRETE WORK

Emirates Modern Industrial area, Umm Al Quwain, UAE-P.O.

Box:1771 Tel: +971557830774

info@beamconcretework.com | www.beamconcretework.com



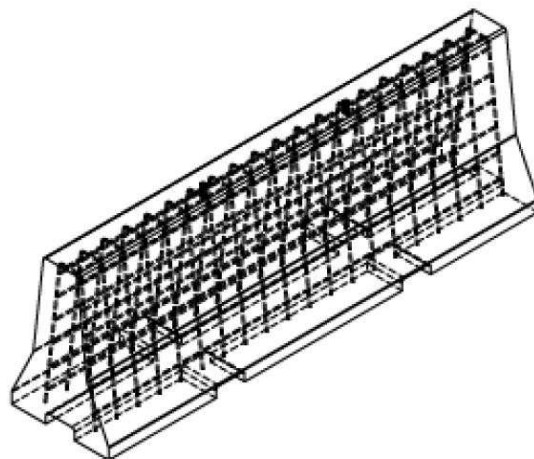
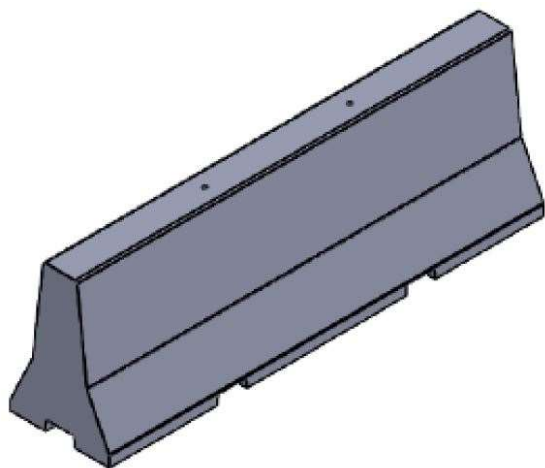
NOTE:-

- * CONCRETE : C40
- * $\pm 10\text{mm}$ IN ALL DIMENSIONS
- * WEIGHT : 2.7 Ton Approx.



B E A M
CONCRETE WORKS

PRECAST DOUBLE SIDE MEDIAN CONCRETE BARRIER



Actual shape Median Concrete Barrier

BEAM CONCRETE WORK

Emirates Modern Industrial area, Umm Al Quwain, UAE-P.O.

Box:1771 Tel: +971557830774

info@beamconcretework.com | www.beamconcretework.com



B E A M
CONCRETE WORKS

PRECAST DOUBLE SIDE MEDIAN CONCRETE BARRIER

Handling: Beam's designed double-sided median barrier possess two lifting hooks on top with 420mm bottom width for easy arrangement to inserting M/F joint without damaging.

Materials: All materials are sourced in accordance with the appropriate Standard and in accordance with the UAE performance specifications.

Concrete strength at transfer 40 N/mm²

Water-cement ratio of 0.45 Maximum

Reinforcement typically 10 mm and 08mm welded mesh.

Design: All units are designed in accordance with RTA. The unit design is typical to Class 3 with a limiting crack width of 0.1mm unless otherwise stated. It is the client's responsibility to provide loading data including any imposed or surcharged loading.

Procedure: Units are wet cast rapidly into Pacman steel molds assist with electro vibes @ 100 unit/hour

Finishes: Faces are painted with reflective road marking paint in vertical strips of 50cm Surface marks from stacking timbers, strand runs and fork truck tine marks can be expected. Surface marks of stacking timber, strand run and mold release agent will fade out over time and use. Where a blemish free surface is required, masonry paint application is recommended.

Trowel Finishes: Prestressed Panels: The trowel face of units will comply with a U1 type finish.

The finish will be uniform and provide full grout cover to aggregates.

Some trowel marks will be visible

Some color and texture variation may be expected.

Stacking timber marks and cement blooming may be expected.

Color variation, trowel pattern and cement blooming will fade over time and weather site works

Site Access: Full site access free of any obstructions or trenches to all site areas is assumed unless otherwise agreed.

Access is required to both sides of barrier installation unless previously arranged at pricing stage.

Delivery vehicles are to unload inside the construction site to minimize on-site handling.

A Suitable hard standing surface must be provided to enable safe lifting operations for a 15 tone telehandler or crane.

The hard standing is to extend a minimum of 4m beyond the edge of the working area.

BEAM CONCRETE WORK

Emirates Modern Industrial area, Umm Al Quwain, UAE-P.O.

Box:1771 Tel: +971557830774

info@beamconcretework.com | www.beamconcretework.com



B E A M
CONCRETE WORKS

+971 55 7830774

INFO@BEAMCONCRETEWORKS.COM | WWW.BEAMCONCRETEWORKS.COM

EMIRATES MODERN INDUSTRIAL AREA

UMM AL QUAWAIN - U.A.E